

Connecting to WIMM Macintosh Desktop Working Remotely

If it becomes necessary that you work from home as a result of COVID-19 isolation requirements there are a number of options open to you. In all cases you must ensure that the machines connecting to Institute systems are patched with the latest security updates and are running anti-virus programs that are updating with the latest virus/malware information.

IP addresses in the screenshots in this document have been deliberately obscured.

It is not possible to allow remote connections to multi-user systems within the Institute. Remote access is only possible from a single remote connection to a single user account on an Institute desktop.

1. If you have a laptop or desktop at home you must use the University of Oxford VPN client when accessing restricted University data and services from your home WiFi. Details of the University VPN can be found at:

<https://help.it.ox.ac.uk/network/vpn/index>

2. If you are transferring confidential or sensitive data from WIMM systems via USB drives or laptops then the data should be encrypted.
3. If you wish to access your WIMM server account home and shared folders remotely you will need to use the VPN client in order to log into the WIMM servers via the Windows MicroFocus client or the Macintosh native client.
4. If you want to access your WIMM home folder (not lab shared folders) remotely it is also possible to do this via a web interface, see:

<https://netstorage.imsu.ox.ac.uk/>

Connecting remotely to your Institute Desktop System

If you wish to connect to your desktop computer in the WIMM then please email:

help@imm.ox.ac.uk

to request an account on the WIMM ssh gateway (this will have the same username and password as your University SSO account).

The instructions below describe how to use your WIMM ssh gateway account to make a connection to your Institute desktop system. Instructions are given for Windows, Macintosh and Ubuntu platforms.

It is essential that you know the IP address of the Institute computer you wish to connect to remotely. It is also essential you know the username and password to log on to your Institute desktop, your SSO (Single Sign On) username and password and your Remote access password.

Follow these instructions to find out the IP address of your Ethernet (wired) connection on your Institute desktops:

Ubuntu desktop:

<https://help.ubuntu.com/stable/ubuntu-help/net-findip.html.en>

Windows desktop:

<https://support.microsoft.com/en-us/help/4026518/windows-10-find-your-ip-address>

Macintosh desktop:

<https://www.wikihow.com/Find-Your-IP-Address-on-a-Mac>

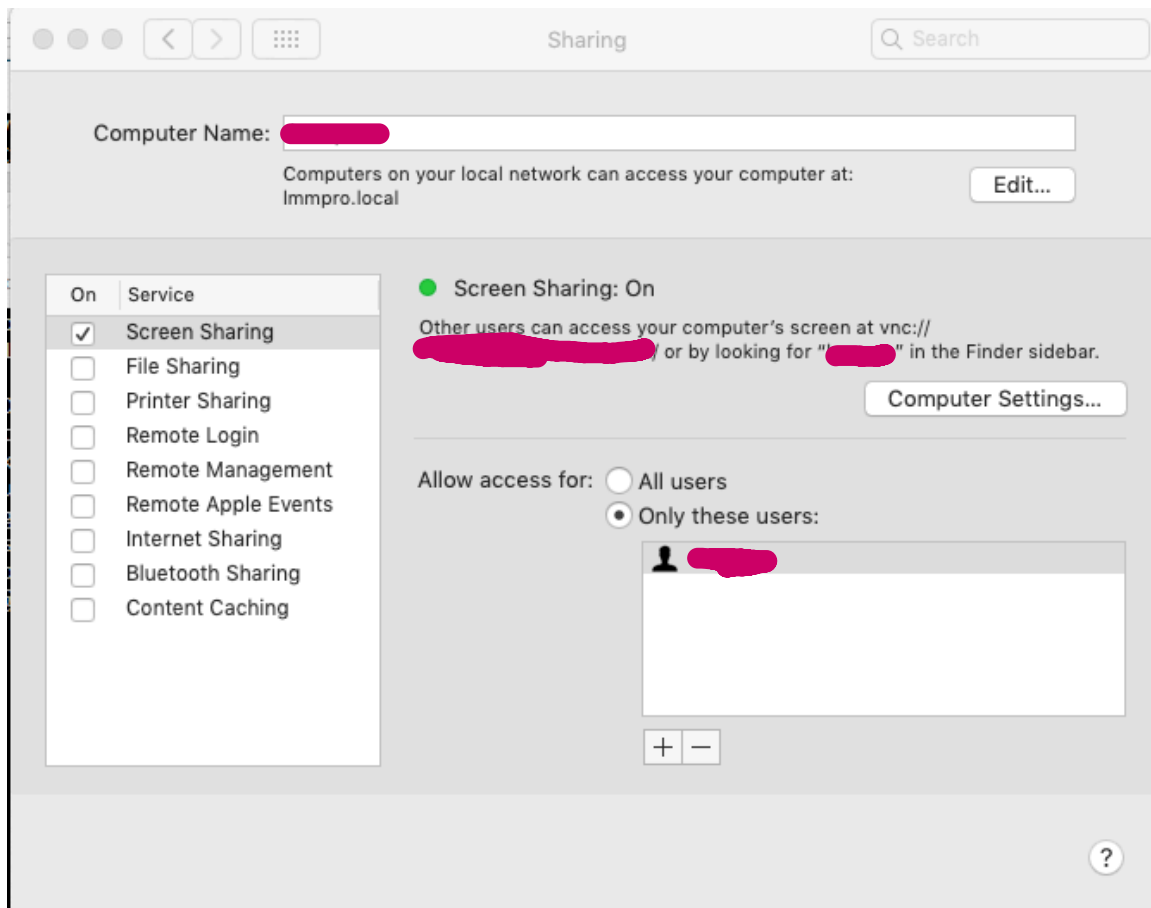
To connect from remote (home) Macintosh to an Institute Macintosh Desktop

On your Institute Macintosh Desktop

Note the Ethernet IP address of the Institute Macintosh system.

Turn on Screen Sharing on the Macintosh:

Apple on menu bar, select System Preferences, select Sharing, click on the Screen Sharing checkbox and add a user who can log in remotely, ensure this user account has a strong password:



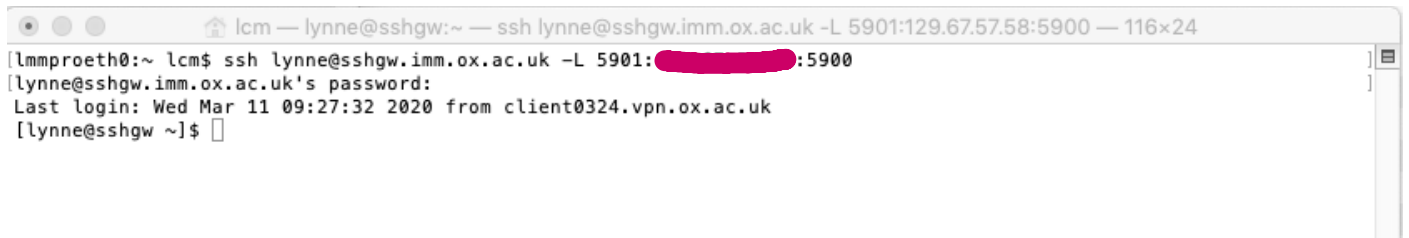
On your Home Macintosh Desktop

On your home Wifi you will need to use Oxford University VPN connection:

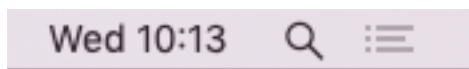
<https://help.it.ox.ac.uk/network/vpn/index>

Open a terminal window (/Applications/Utilities) and type the following commands:

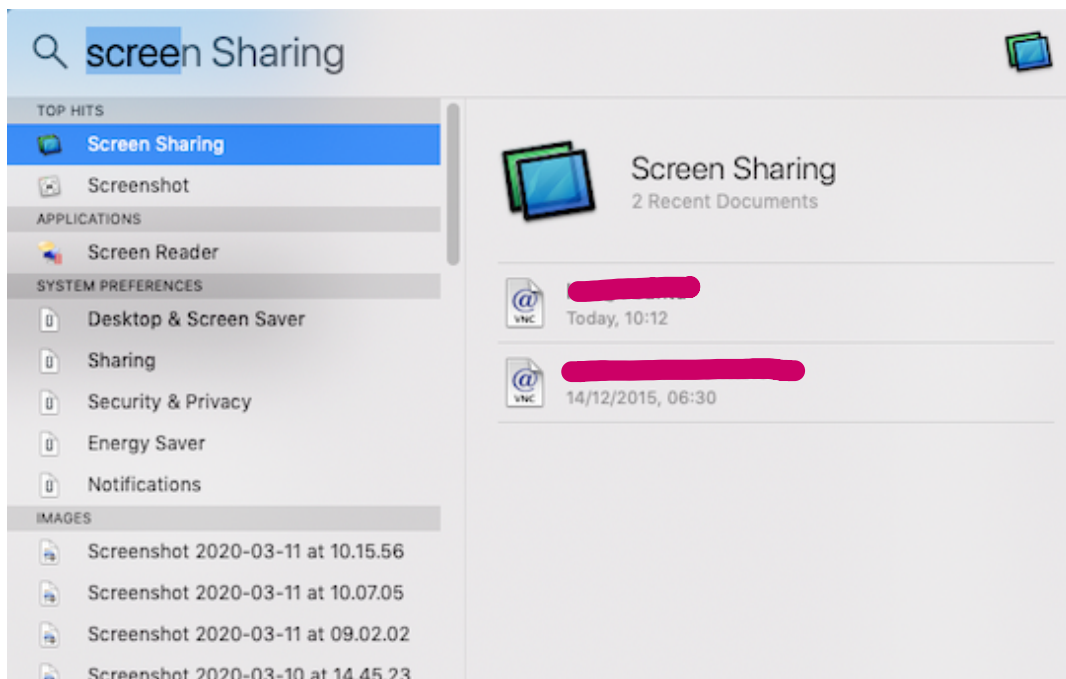
```
ssh SSO_username@sshgw.imm.ox.ac.uk -L 5901:IP_Address_WIMM_Macintosh:5900
```



Then click on the magnifying glass on the top right of the menu bar:



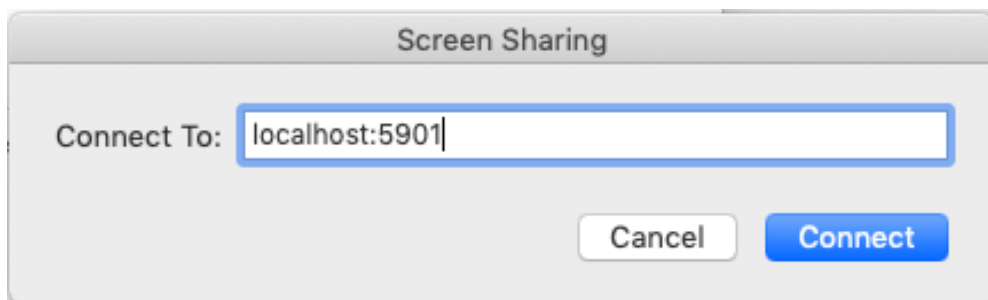
Start typing the word screen:



Double-click **Screen Sharing** to start the Screen Sharing application (located in folder /System/Library/CoreServices/Applications)

Enter the following in the **Connect To** box:

```
localhost:5901
```



Click **Connect**, you will be prompted to enter username and password for the Institute Macintosh, enter the username and password for the account you allowed remote access for. The Institute Macintosh desktop will then be displayed as a window on your home desktop.

When you have finished your remote session to your Institute desktop it is essential that you exit the ssh gateway by typing exit:

```
lcm — lynne@sshgw:~ — -bash — 155x24
Last login: Wed Mar 11 11:52:29 on ttys000
[lmmproeth0:~ lcm$ ssh lynne@sshgw.imm.ox.ac.uk -L 5901:129.67.56.124:5900
[lynne@sshgw.imm.ox.ac.uk's password:
Last login: Wed Mar 11 14:42:55 2020 from lmmproeth0.imm.ox.ac.uk
[[lynne@sshgw ~]$ exit
logout
Connection to sshgw.imm.ox.ac.uk closed.
lmmproeth0:~ lcm$
```

To connect from remote (home) Windows PC to an Institute Macintosh Desktop

On your Institute Macintosh Desktop

Follow the steps in **On your Institute Macintosh Desktop** above.

On your Home Windows PC

On your home Wifi you will need to use Oxford University VPN connection:

<https://help.it.ox.ac.uk/network/vpn/index>

Download and install the VNC Viewer from:

<https://www.realvnc.com/en/connect/download/viewer/>

Open a command prompt as Administrator:

<https://blog.techinline.com/2019/08/14/run-command-prompt-as-administrator-windows-10/>

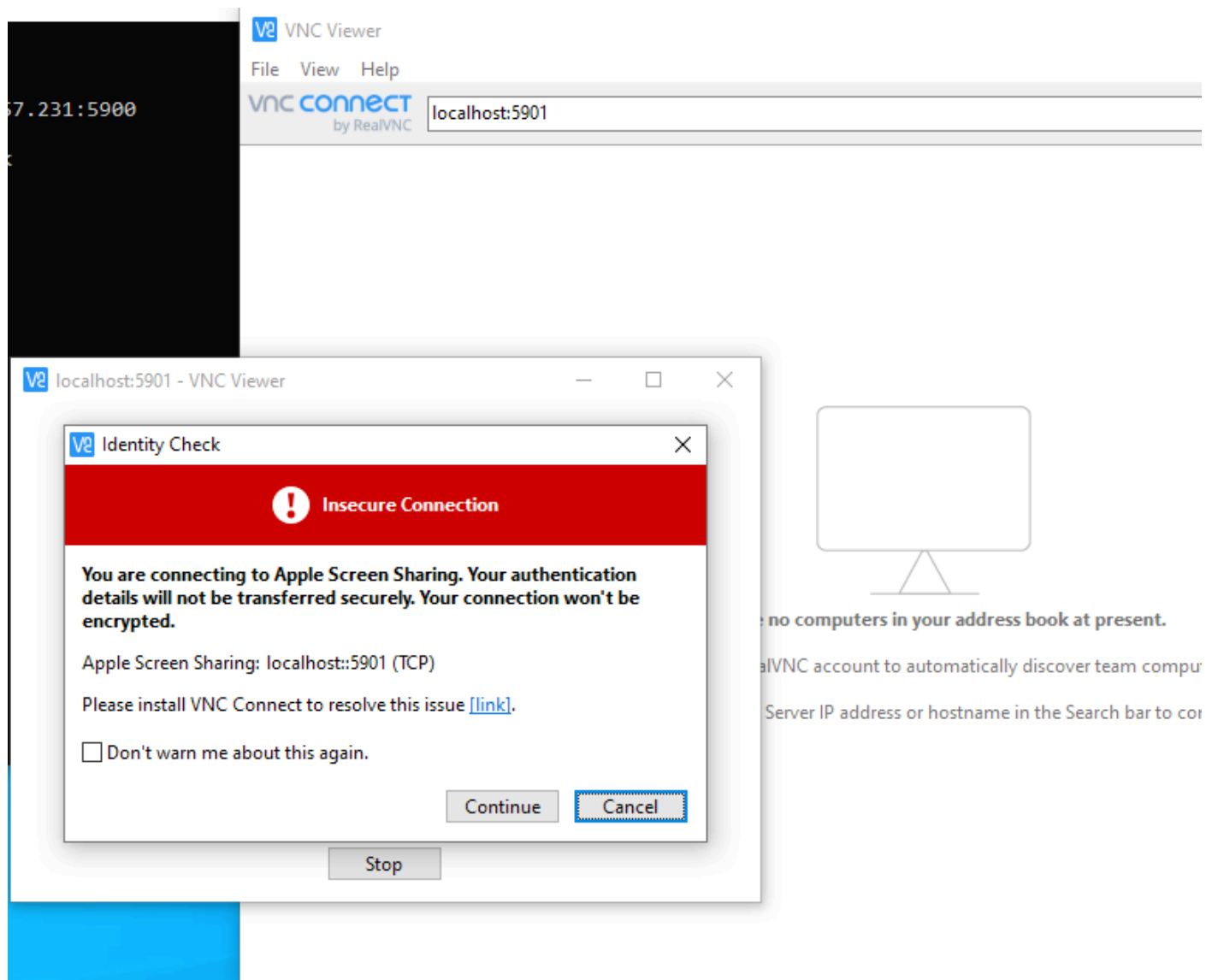
In the administrator command prompt type the following command:

```
ssh SSO_username@sshgw.imm.ox.ac.uk -L 5901:WIMM_Macintosh_IP_Address:5900
```

Run VNC Viewer and in the address window type:

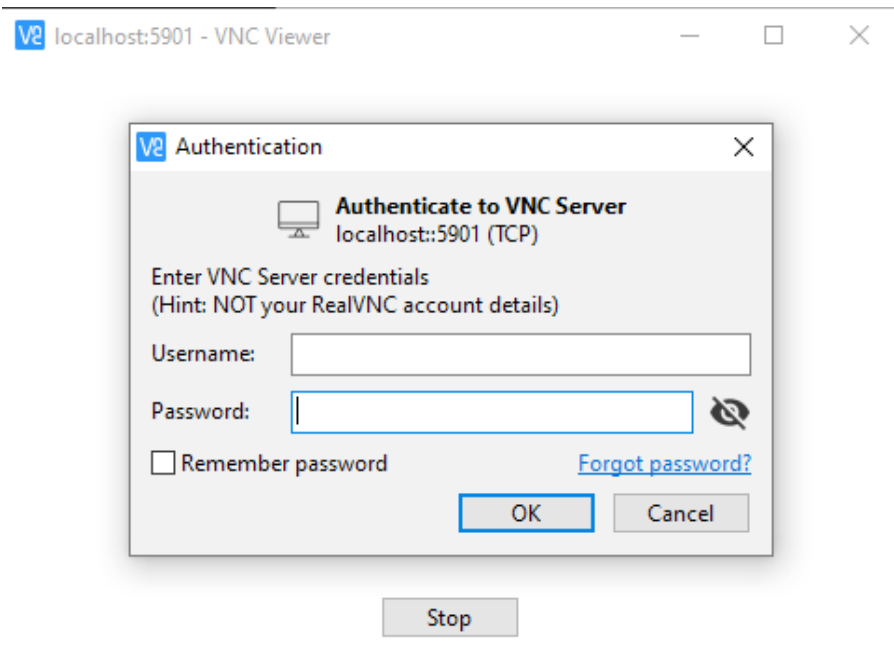
localhost:5901

and press Return:



Tick **Don't warn me about this again** and click **Continue**.

You will be prompted to enter the username and password for the Institute Macintosh:



Enter the details and click OK and your Macintosh desktop will be displayed on your Windows PC desktop.

When you have finished your remote session to your Institute desktop it is essential that you exit the ssh gateway by typing exit:

```
lcm — lynne@sshgw:~ — -bash — 155x24
Last login: Wed Mar 11 11:52:29 on ttys000
[lmmproeth0:~ lcm$ ssh lynne@sshgw.imm.ox.ac.uk -L 5901:129.67.56.124:5900
[lynne@sshgw.imm.ox.ac.uk's password:
Last login: Wed Mar 11 14:42:55 2020 from lmmproeth0.imm.ox.ac.uk
[[lynne@sshgw ~]$ exit
logout
Connection to sshgw.imm.ox.ac.uk closed.
lmmproeth0:~ lcm$
```