

Sorting Made Simple for double-emulsion droplets

Introducing the Large Particle Sorting Upgrade for Sony Benchtop Cell Sorters
Introducing the Samplix® Xdrop®, a microfluidic platform generating double emulsion droplets for the encapsulation of single cells.



Tuesday, June 23, 2026

11:30 - 14:00

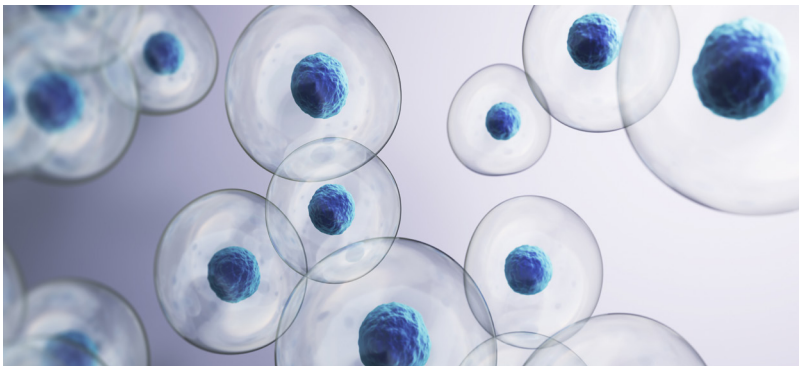
Magdalen Centre, Robert Robinson Avenue, The Oxford Science Park

MA900 Multi-Application Cell Sorter

Advances in cell therapy, cancer biology, and immunology increasingly require analytical tools that can accommodate complex models and functional assays. Emerging applications involving large cells, aggregates, and "lab-on-a-particle" platforms demand reliable characterization and sorting of larger particles. Conventional flow cytometers have historically struggled with larger particles due to clogging, slow sort speeds, and reduced recovery. In this seminar, we will introduce new capabilities enabling researchers to seamlessly integrate next-generation large-particle assays into routine flow cytometry workflows.

Agenda

- 11:30 - 12:00 Learn about Sony Cell Sorters offering gentle and high-throughput sorting across diverse applications with intelligent automation and user-centric workflows
- 12:00 - 12:30 Understand the key enhancements provided by the new Large Particle Sorting Upgrade available on the SH800 and MA900 Cell Sorters
- 12:30 - 13:00 A light lunch will be provided
- 13:00 - 14:00 Discover how this new capability has been seamlessly integrated with the Xdrop platform from Samplix to offer a workflow for isolation of double-emulsion droplets with high efficiency and exceptional recovery rates.



Speakers



Laura Mathä
Field Application Specialist
Sony Biotechnology Europe



Bárbara Schlicht
Product Manager
Samplix

Who should attend

This event is ideal for researchers, scientists, and core facility managers working in cell therapy, cancer biology, and immunology who are looking to expand their flow cytometry capabilities.

